



**ECUBE INNO**  
E-CUBE INNO goes where you go



# You go where E-CUBE inno goes,

ALPINION's E-CUBE inno introduces more innovative technology. The E-CUBE inno is a HCU (hand carried unit) recognized for image uniformity, deep penetration, and strong durability. The HCU is built around ALPINION's in-house technology to provide users a rapid and accurate diagnosis, regardless of space limitations and with guaranteed performance.

- **Optimized Imaging Performance**  
for a Conclusive Diagnosis
- **Fast & Intuitive** Workflow,  
Simple Operation, and  
a Fast Boot-Up Time
- **Solid performance and design**  
that provides uniform results  
under any circumstances



  
**E-CUBE** INNO

# E-CUBE inno goes where you go.

The E-CUBE inno overcomes any on-site limitations, regardless of **user dependency** or **patient dependency**, and can be hand-carried wherever needed.





# Optimal Image Performance for high-risk diagnosis

The E-CUBE inno provides an intuitive workflow to diagnose lesions as well as an excellent imaging performance that facilitates easy nerve detection and needle tracking. The highly optimized imaging performance is suitable for all types of diagnosis or treatments; in addition, it pinpoints specific areas that require exceptional precision in high-risk diagnostic environments.

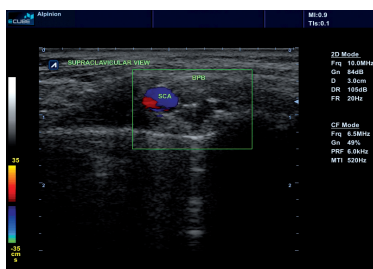
## SUPERIOR IMAGING PERFORMANCE

ALPINION's fundamental image performance is outstanding for blocking nerves or detailing the vascular system. Superb linear images are acquired from ALPINION's core technology to minimize a patient's case dependency and administer accurate treatments such as nerve blocks and local anesthesia.

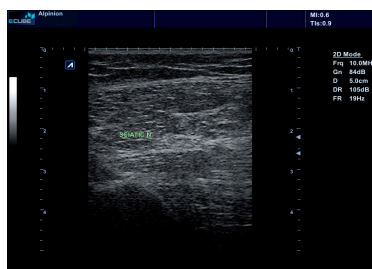
- Increase the accuracy of sono-guided injections by tracking blood vessels.
- Enhance the efficiency of nerve blocks through the accurate detailing of the peripheral vascular system.

## NEEDLE VISUALIZATION

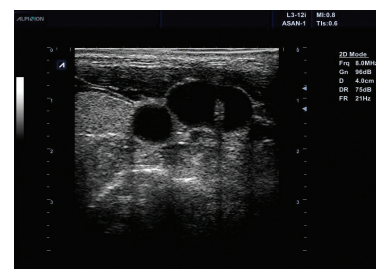
The excellent resolution of the E-CUBE inno provides an advanced Needle Visualization that identifies the location of needle tips and target areas accordingly. This also enables the easy and quick detection of microscopic tissue such as nerves or blood vessels without supplemental equipment or specialized needles. The E-CUBE inno enhances the diagnostic efficiency of various precision-based procedures such as upper extremity blocks, neuraxial blocks, femoral nerve blocks, steep angle injections, and epidurals/regional pain blocks.



Brachial Plexus Block(BPB)



Sciatic nerve



Central line insertion



# Never stop for life-saving situation

The E-CUBE inno offers consistent performance and an optimized environment for any emergent situation. Single crystal transducers, developed exclusively by ALPINION, enable high-resolution Echo imaging for a conclusive diagnosis with a quick diagnostic-conversion mode.

## RAPID/ZERO-SECOND BOOT-UP TIME

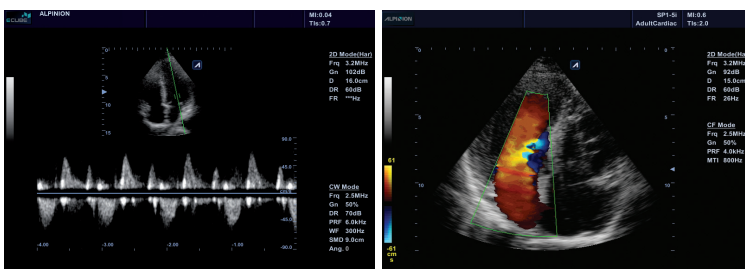
A rapid boot-up time is essential for patient treatment under emergency conditions. The E-CUBE inno promises instantaneous use in critical moments.

## INTUITIVE WORKFLOW, Xpeed™

ALPINION's Xpeed™ introduces one-touch optimization technology that facilitates an efficient workflow to activate a B-mode through a one-button process. This helps save diagnostic time through efficient, easy, and rapid use.

## OPTIMAL ECHO PACKAGE

- The E-CUBE inno delivers a dedicated Echo Package for emergency medicine and a conclusive diagnosis.
- Single Crystal Phased Array (SP1-5i) transducer, equipped on the E-CUBE inno, produce accurate Echo imaging with higher resolution images than those of general transducers made of piezo-ceramic materials.
- A conclusive diagnosis can be provided with more refined and detailed data through a built-in ECG.
- The E-CUBE inno enables users to reach a conclusive diagnosis that minimizes the workflow per each phase to acquire a rapid diagnosis as well as an analysis of quantitative data through specialized echo measurement software.



**No limits to go**

The E-CUBE inno goes wherever required without limitations.



# Improve accuracy for diagnosis

The E-CUBE inno is embedded with ALPINION's core imaging technology to provide optimized solutions for a conclusive diagnosis of the musculoskeletal system. The fundamental core imaging technology allows the E-CUBE inno to identify the unique characteristics of microscopic tissues for enhanced diagnostic accuracy. ALPINION's in-house imaging technology facilitates a highly optimized diagnostic user environment for a conclusive diagnosis.

## SUPERB LINEAR IMAGING PERFORMANCE

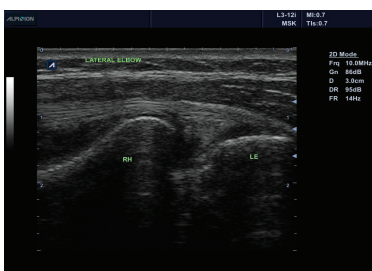
The high-resolution linear imaging performance is outstanding for the diagnosis of microscopic musculoskeletal lesions. Exceptional performance is a key for the diagnosis of inflammation, small vessels, and bone erosion. The E-CUBE inno utilizes wide-bandwidth (broad frequency bandwidth) frequencies of 3-12 MHz to effectively minimize patient dependency and maximize the range of diagnosis.

## SRI (SPECKLE REDUCTION IMAGING)

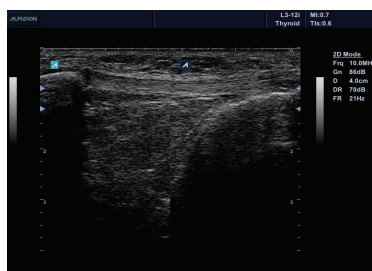
ALPINION's unique SRI Technology removes artifacts and enhances tissue edges for a clear diagnosis of the microscopic musculoskeletal structure.

## THI (TISSUE HARMONIC IMAGING)

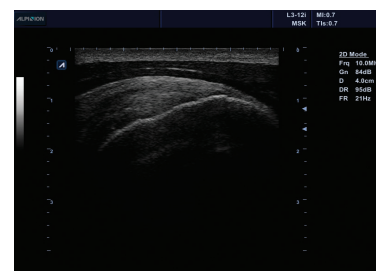
The E-CUBE inno utilizes THI to enhance image contrast and spatial resolution. It decreases noise interference to provide easily-recognized images that increase the accuracy of imaging diagnosis.



Lateral elbow



Patella tendon



Supraspinatus tendon

# E-CUBE inno Design

## DESIGNED FOR DURABILITY

The solid durable design provides consistent imaging performance. In addition, the semi-glossy exterior prevents dust contamination that can interfere with diagnosis.

## MICRO-PINLESS CONNECTOR AND DUST COVER

The E-CUBE inno utilizes a micro-pinless connector to prevent any subtle interference that would degrade ultrasound images. It also has a transducer dust door that prevents dust accumulation and guarantees a stable imaging performance.

## INTELLIGENT AND EASY-TO-USE KEY GROUPING FOR ANY EMERGENT SITUATIONS

ALPINION's meticulous attention-to-detail includes intelligent and intuitive user keys that enable a quick and easy diagnostic environment.





**Extreme Clarity**  
**Efficient Workflow**  
**Ergonomic Design**

ALPINION promises to provide these three values to customers.  
***We are Ultrasound Professionals***



**ALPINION MEDICAL SYSTEMS**

Verdi Tower, 72, Digital-ro 26-gil, Guro-gu, Seoul, 152-848, Korea

**Homepage** [www.alpinion.com](http://www.alpinion.com)

**E-mail** [international@alpinion.com](mailto:international@alpinion.com)

**TEL** +82-2-3282-0900

**FAX** +82-2-851-5591

Copyright©2014 ALPINION MEDICAL SYSTEMS CO.,LTD. All rights reserved.  
Catalogue contents may be partly changed without prior notice to customers  
due to performance enhancements.